

Ln-6 Plants: Preparing and Storing FoodI. Technical Words:1. Chlorophyll:

A substance present in the leaf which makes a leaf green.

2. Photosynthesis:

The process of preparation of food by green leaves of plants.

II. Short Answers:

1. Leaves of croton appear dark red. Do these leaves have chlorophyll? Why?

Ans. Yes. The leaves of some plants like croton appear red because of the presence of a red substance that hides chlorophyll.

2. A balance between plants and animals is essential. Why?

Ans. \* Animals and plants depend on each other.  
\* Plants give animals food and oxygen and animals give carbon dioxide which is used by the plants to prepare food.

III. Long Answers:

1. How would you show that a green leaf has starch in it?

Ans. \* Pick a fallen green leaf of a healthy plant.

\* Bleach the leaf by first boiling it in alcohol.

\* Wash it in cold water.

\* Add few drops of iodine.

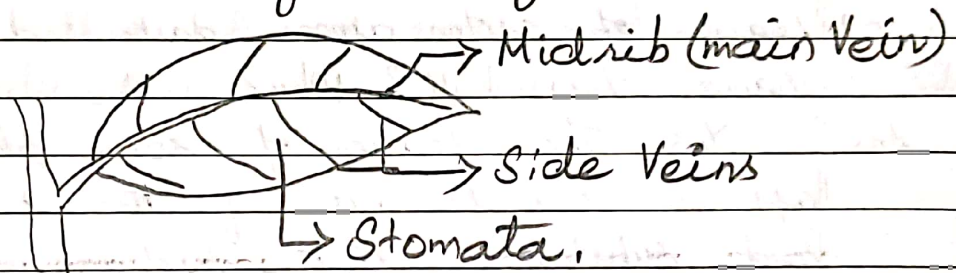
\* The bleached leaf will turn to blue-black colour.

\* This shows the presence of starch in a green leaf.

2. Draw and explain the parts of a leaf.

Ans.

Parts of a leaf.



(i) Midrib:

\* The main vein is called the midrib.

\* It is formed by a double pipeline of cells <sup>one</sup> to carry water and minerals to all the cells of the leaf.

\* The other carries the food to the other parts of the plant.

(ii) Side Veins:

\* It spreads out from the midrib to the tip of leaf.

(iii) Stomata:

\* They are present on the underside of the

leaf.

\* The stomata takes in the carbon dioxide and gives out oxygen and water vapour.

IV Hot's:

1. The leaves of a plant kept in the dark do not produce starch. Why?

Ans. \* Water, carbon dioxide, chlorophyll and sunlight are required by plants to prepare food.  
\* The leaves of plant kept in the dark do not produce starch as photosynthesis does not take place in the absence of sunlight.

2. A yellow leaf cannot prepare food. Why?

Ans. \* Only green leaves can make the food for the plant since they contain chlorophyll.  
\* A yellow leaf does not contain chlorophyll. So, it cannot prepare food.

4th Nov 2021  
31/7/21

## August Month Notes

### Ln-7 Plants: Living and Surviving.

#### I. Technical Words:

##### 1. Lianas:

Climbers that grow in rainforests are called lianas. Some are as thick and strong as ropes.

##### 2. Aquatic plants:

Plants that grow in water.

##### 3. Insectivorous Plants:

Plants that eat insects.

#### II. Short Answers:

##### 1. How does the underwater plants clean the water?

Ans. \* Plants like tape grass and pondweed remain under water.

\* They clean the water by removing the carbon dioxide breathed out by fishes and turtles.

##### 2. What are the kinds of plants that grow in rainforests?

Ans. \* In rain forests there are both tall and short trees with lots of climbers around.

\* The ground is covered with leaves, ferns and fungi.

### III. Long Answers:

1. What are the main uses of the plants of the grass family.

Ans.

\* The cereal plants of the grass family provide food for humans and animals.

Ex: wheat, rice, jowar, bajra and fodder.

\* The bamboo plants provide food as well as things like chairs, baskets, mats, toys and huts.

\* We get paper from papyrus plant

\* Medicines are also obtained from plants.

2. Write a short note on the areas in which the terrestrial plants grow.

	Area	Climate	Structure	Examples
(i)	Hills	Cold	Tall and straight trees with needle like leaves and bear cones.	Pine, fir and cedar.
(ii)	Plains	Hot	Trees have lot of branches, shed their leaves in winter	Mango, banyan and Sal.
(iii)	Hot and damp	Hot and humid	They are evergreen trees with lots of leaves don't shed leaves in winter.	Teak, Coconut and rice.
(iv)	Deserts	Extremely hot	Plants have green fleshy stem and have spines instead of leaves.	Cactus and palm.

(v) Marshy	Rainy	They have breathing roots. The roots grow out of the soil and water to breathe.	Mangroves.
------------	-------	---	------------

IV Hots:

1. A lotus plant cannot grow in desert. Why?

Ans \* A lotus plant has hollow and light stem which keeps the leaves and flowers afloat.

\* The leaves are broad and have stomata only on the upper side.

\* That is why lotus plant cannot grow in the desert.

2. The roots of the plants of the grass help to conserve soil. How?

Ans \* The plants of the grass family have fibrous roots.

\* These roots bind the soil together while fixing the plants to the soil and prevents soil erosion.

H. Anand  
31/7/20